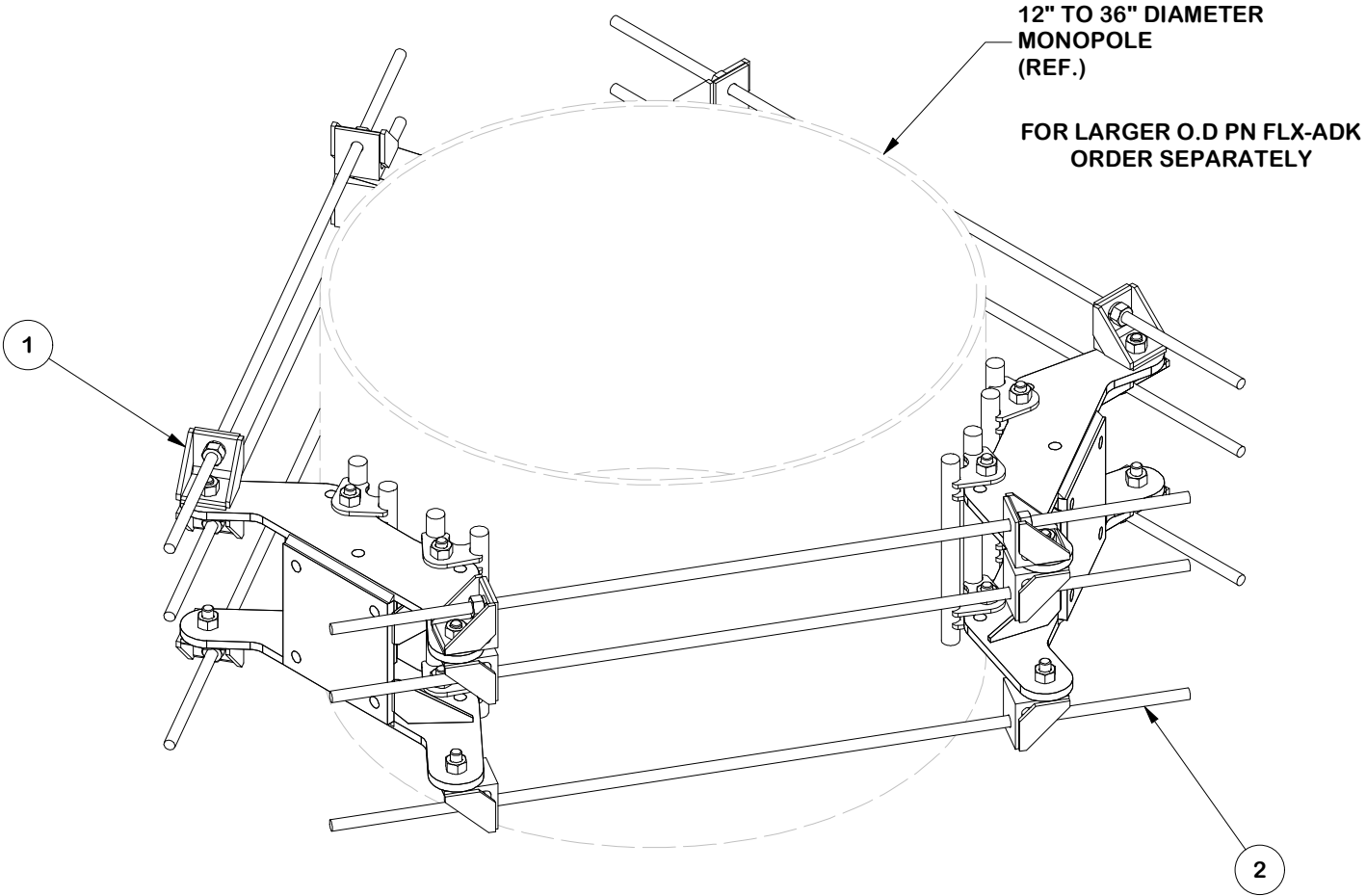
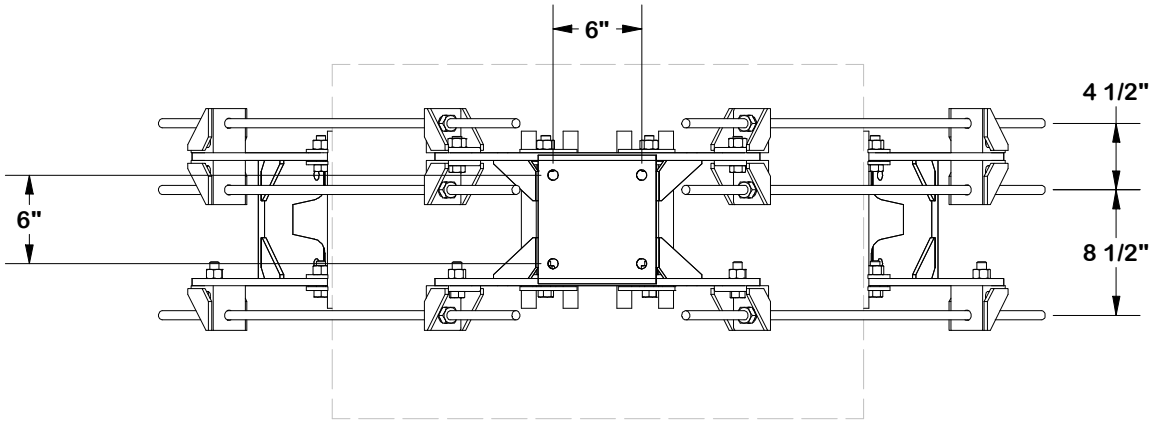
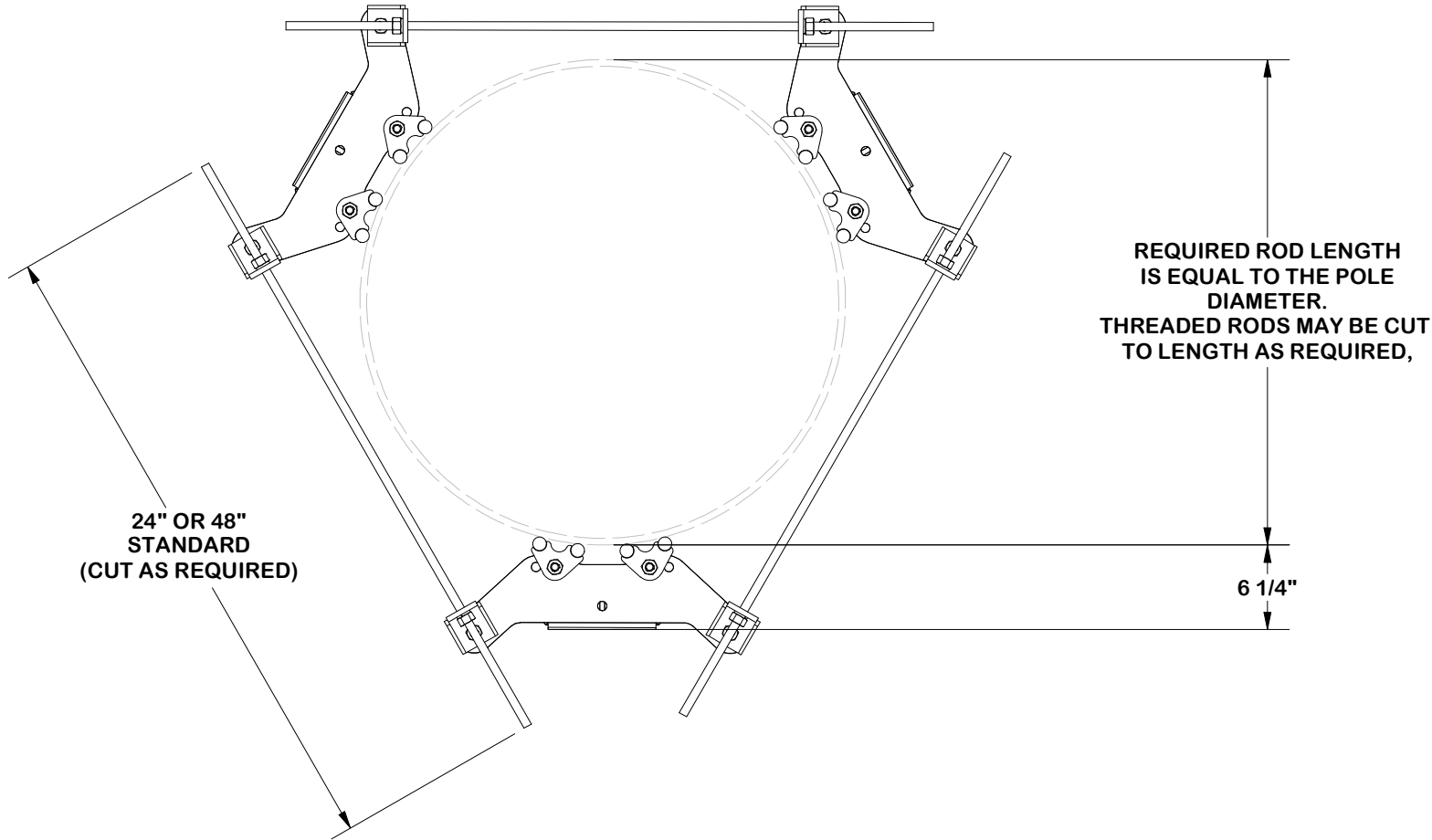



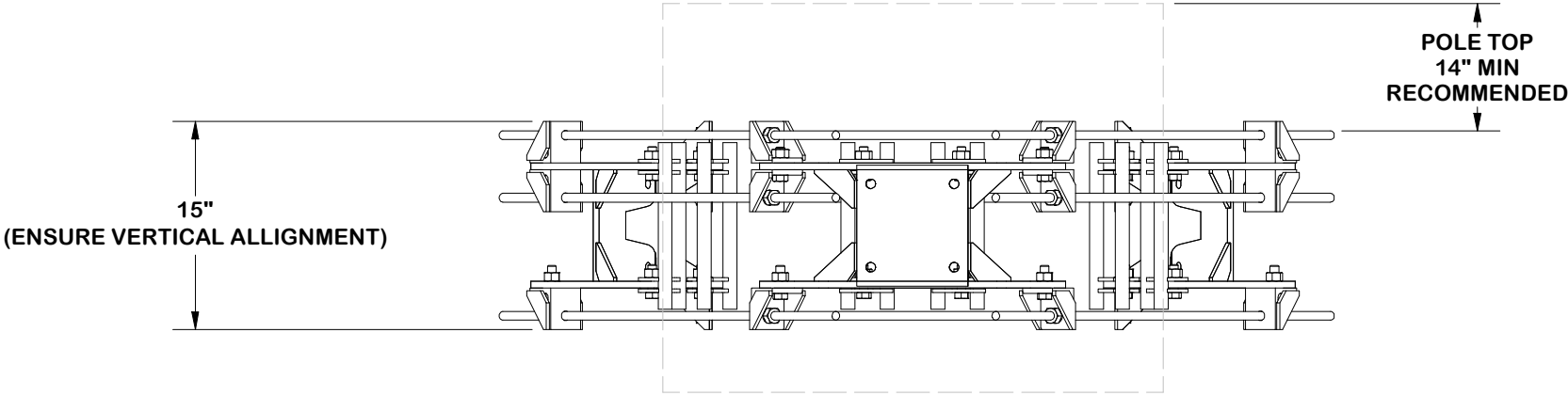
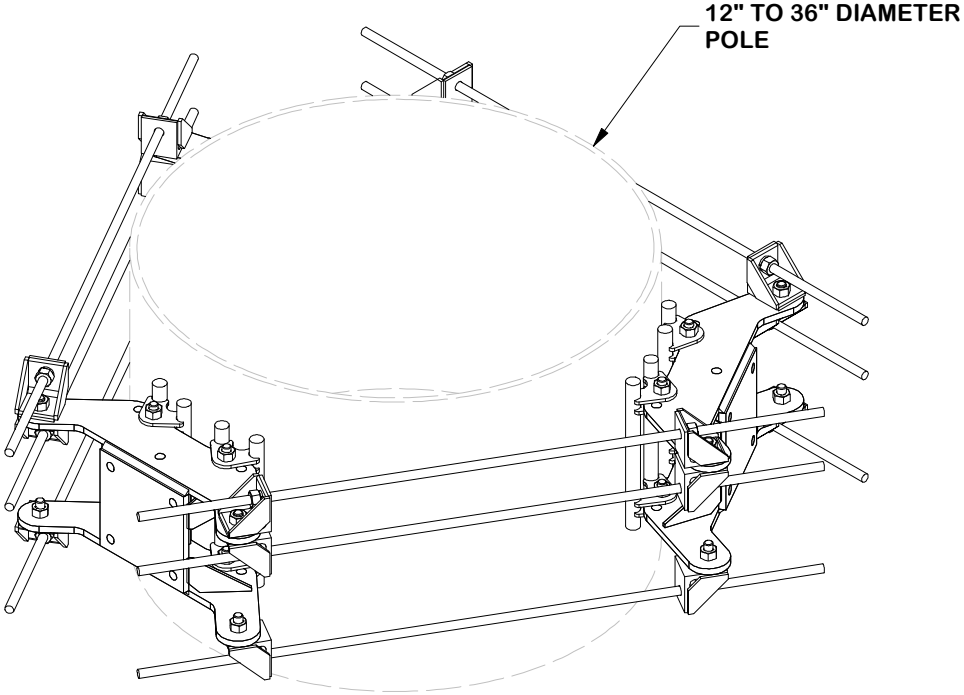
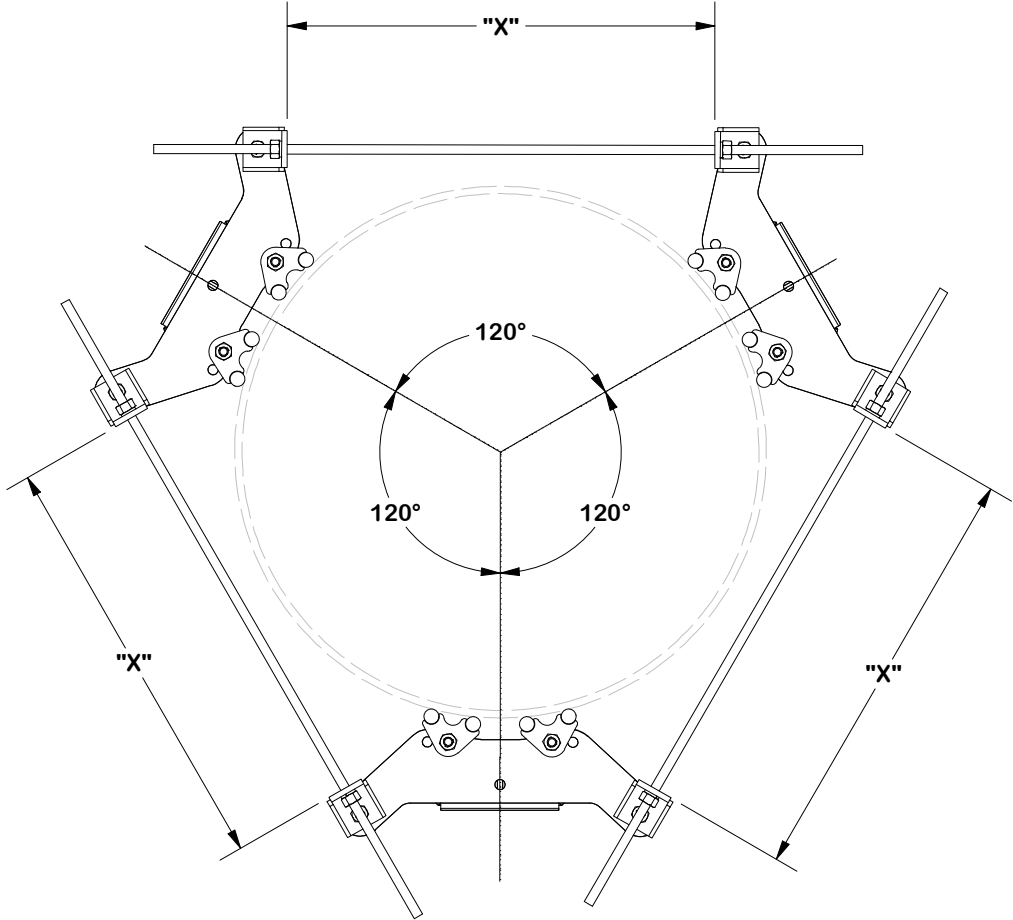
PARTS LIST						
ITEM	QTY	PART NO.	BOX NO.	PART DESCRIPTION	UNIT WT.	NET WT.
1	3	FLX-SDSS	P-FLX-SDSS	FLEXIBLE RING MOUNT SINGLE SECTOR ASSEMBLY	72.51	217.54
2	1	LWRM-HDWE	P-LWRM-HDWE	THREADED ROD KIT WITH HARDWARE	59.26	59.26
					TOTAL WT. #	276.80



FINISH:  
HOT DIP GALVANIZED.

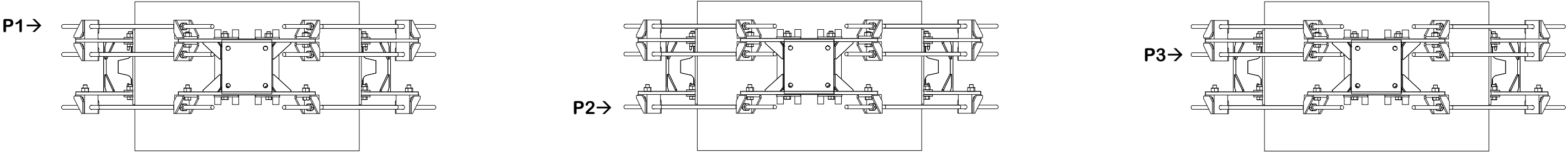
					<div>TOLERANCE NOTES</div> <div>TOLERANCES ON DIMENSIONS, UNLESS OTHERWISE NOTED ARE: SAWED, SHEARED AND GAS CUT EDGES (<math>\pm 0.030''</math>) DRILLED AND GAS CUT HOLES (<math>\pm 0.030''</math>) - NO CONING OF HOLES LASER CUT EDGES AND HOLES (<math>\pm 0.010''</math>) - NO CONING OF HOLES BENDS AND ANGLES ARE <math>\pm 1/2</math> DEGREE ALL OTHER MACHINING (<math>\pm 0.030''</math>) ALL OTHER ASSEMBLY (<math>\pm 0.060''</math>)</div>		<div>DESCRIPTION</div> <div>FLEXIBLE RING MOUNT 3-SIDED ASSEMBLY</div>			<div><div><div>SITE PRO</div><div>1</div></div><div>Engineering Support Team: sp1engineering@valmont.com</div></div> <div>A valmont  COMPANY</div>								
A	CHANGED KITS				NCS	NSP	10/3/2024	PATENT INFORMATION: WWW.SITEPRO1.COM/PATENTS			CPD NO.	DRAWN BY		ENG. APPROVAL		PART NO.	1 OF 5 PAGE	
REV	DESCRIPTION OF REVISIONS				CPD	BY	DATE	PROPRIETARY NOTE: THE DATA AND TECHNIQUES CONTAINED IN THIS DRAWING ARE PROPRIETARY INFORMATION OF VALMONT INDUSTRIES AND CONSIDERED A TRADE SECRET. ANY USE OR DISCLOSURE WITHOUT THE CONSENT OF VALMONT INDUSTRIES IS STRICTLY PROHIBITED.			CLASS	SUB	DRAWING USAGE		CHECKED BY			DWG. NO.
REVISION HISTORY											87	02	SHOP		CSL 12/6/2024			FLX3-SD

NOTE:  
ENSURE EQUAL DISTANCE  
BETWEEN BRACKETS "X"  
AND AT 120° APART

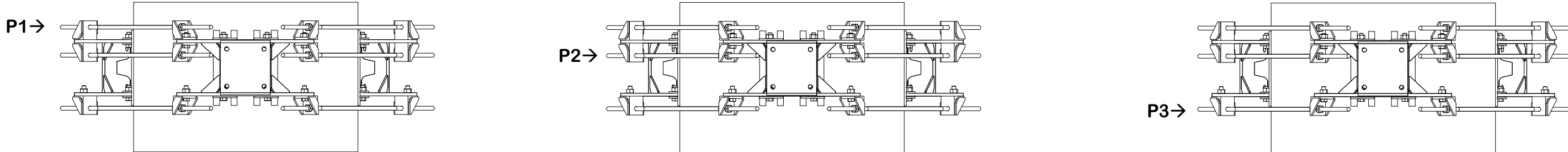


					TOLERANCE NOTES	DESCRIPTION			SITE PRO 1		Engineering Support Team: sp1engineering@valmont.com
					TOLERANCES ON DIMENSIONS, UNLESS OTHERWISE NOTED ARE: SAWED, SHEARED AND GAS CUT EDGES ( $\pm 0.030"$ ) DRILLED AND GAS CUT HOLES ( $\pm 0.030"$ ) - NO CONING OF HOLES LASER CUT EDGES AND HOLES ( $\pm 0.010"$ ) - NO CONING OF HOLES BENDS AND ANGLES ARE $\pm 1/2$ DEGREE ALL OTHER MACHINING ( $\pm 0.030"$ ) ALL OTHER ASSEMBLY ( $\pm 0.060"$ )	FLEXIBLE RING MOUNT 3-SIDED ASSEMBLY			A valmont COMPANY		
A	CHANGED KITS	NCS	NSP	10/3/2024		CPD NO.	DRAWN BY	ENG. APPROVAL	PART NO.		
REV	DESCRIPTION OF REVISIONS	CPD	BY	DATE	PATENT INFORMATION: WWW.SITEPRO1.COM/PATENTS	NCS	NSP 5/22/2024	BMC 12/6/2024	FLX3-SD		
REVISION HISTORY					PROPRIETARY NOTE: THE DATA AND TECHNIQUES CONTAINED IN THIS DRAWING ARE PROPRIETARY INFORMATION OF VALMONT INDUSTRIES AND CONSIDERED A TRADE SECRET. ANY USE OR DISCLOSURE WITHOUT THE CONSENT OF VALMONT INDUSTRIES IS STRICTLY PROHIBITED.	CLASS	SUB	CHECKED BY	DWG. NO.		
						87	02	SHOP CSL 12/6/2024	FLX3-SD		

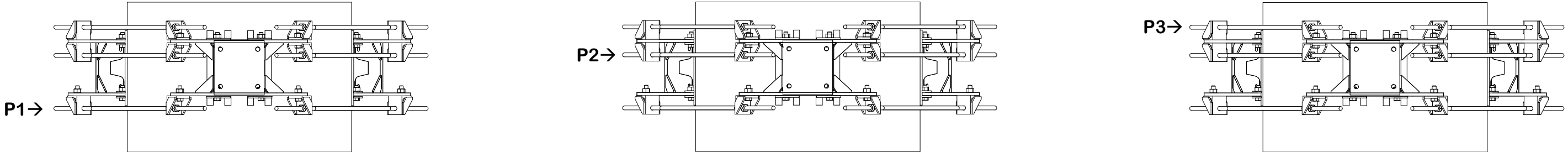
# INSTALL ORDER



# INITIAL TIGHTENING



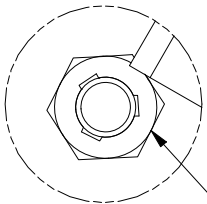
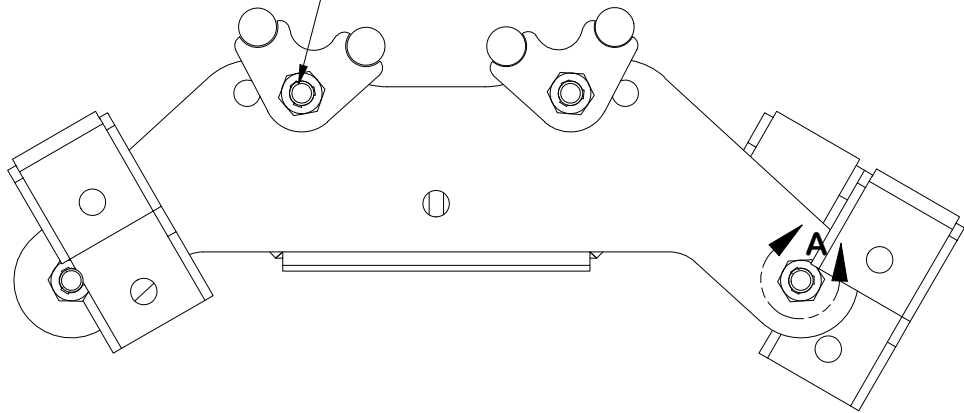
# FINAL TIGHTENING



					TOLERANCE NOTES		DESCRIPTION			SITE PRO 1		Engineering Support Team: sp1engineering@valmont.com	
					TOLERANCES ON DIMENSIONS, UNLESS OTHERWISE NOTED ARE: SAWED, SHEARED AND GAS CUT EDGES (± 0.030") DRILLED AND GAS CUT HOLES (± 0.030") - NO CONING OF HOLES LASER CUT EDGES AND HOLES (± 0.010") - NO CONING OF HOLES BENDS AND ANGLES ARE ± 1/2 DEGREE ALL OTHER MACHINING (± 0.030") ALL OTHER ASSEMBLY (± 0.060")		FLEXIBLE RING MOUNT 3-SIDED ASSEMBLY			A valmont COMPANY			
A	CHANGED KITS	NCS	NSP	10/3/2024	PATENT INFORMATION: WWW.SITEPRO1.COM/PATENTS		CPD NO.	DRAWN BY	ENG. APPROVAL	PART NO.		FLX3-SD	
REV	DESCRIPTION OF REVISIONS	CPD	BY	DATE	PROPRIETARY NOTE: THE DATA AND TECHNIQUES CONTAINED IN THIS DRAWING ARE PROPRIETARY INFORMATION OF VALMONT INDUSTRIES AND CONSIDERED A TRADE SECRET. ANY USE OR DISCLOSURE WITHOUT THE CONSENT OF VALMONT INDUSTRIES IS STRICTLY PROHIBITED.		CLASS	SUB	CHECKED BY	DWG. NO.		FLX3-SD	
REVISION HISTORY							87	02	SHOP				

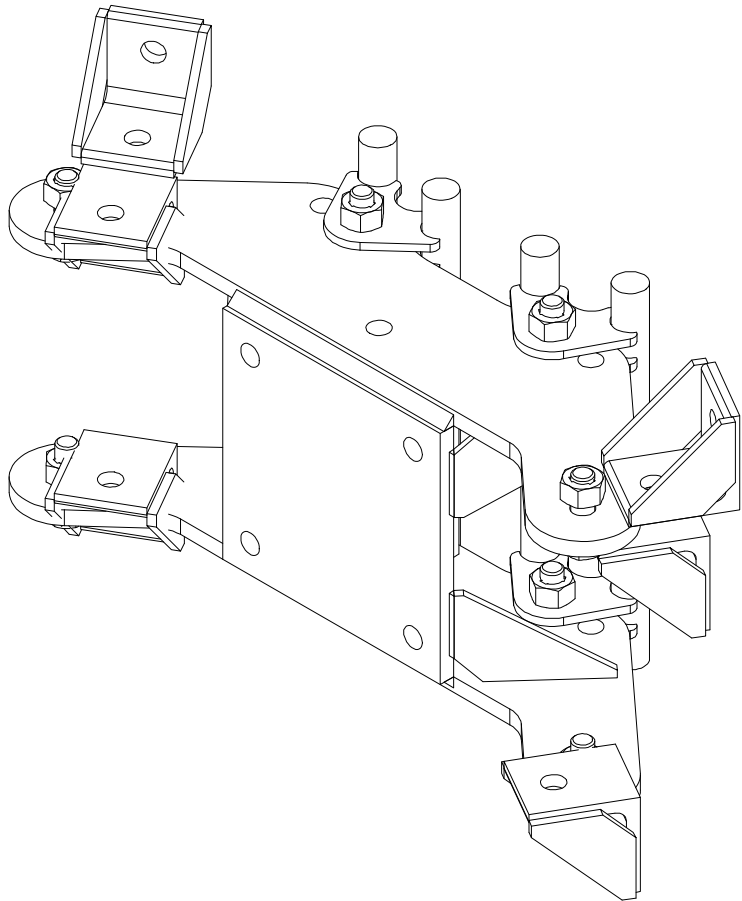
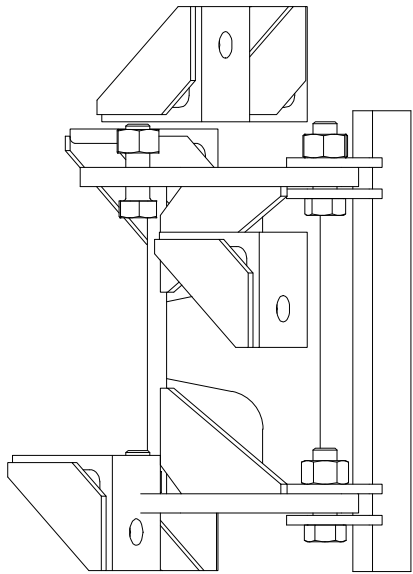
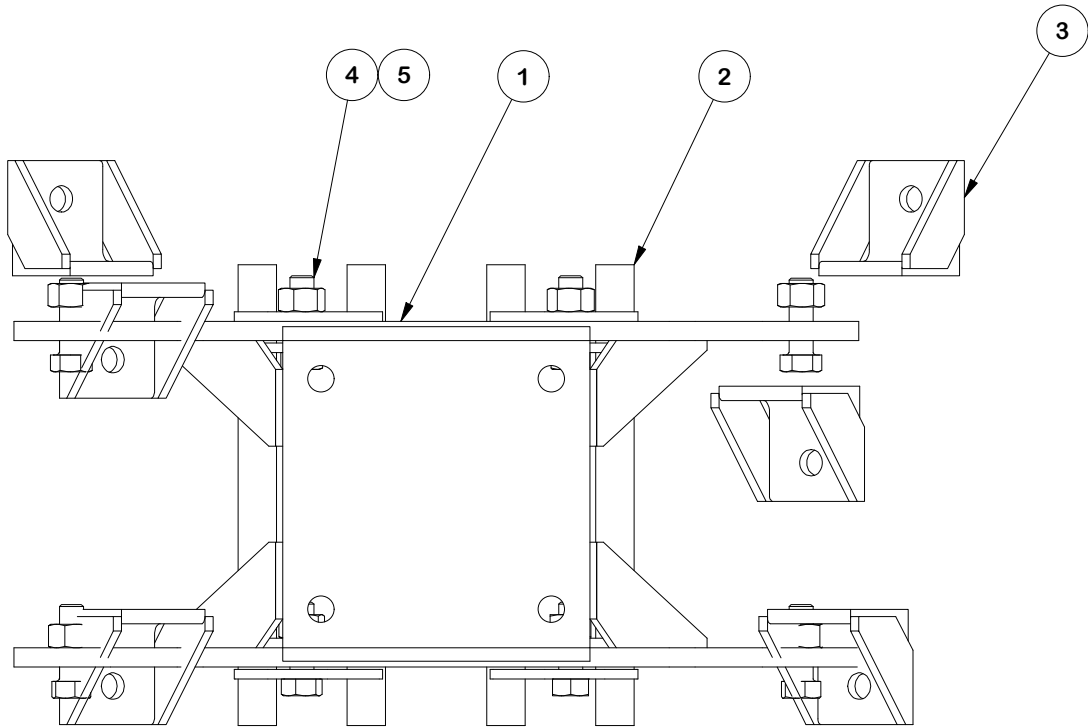
PARTS LIST					
ITEM	QTY	PART NO.	PART DESCRIPTION	UNIT WT.	NET WT.
1	1	X-CR-SDW	FLEXIBLE RING MOUNT	42.23	42.23
2	2	X-CR-PW12	12" CLAMP RING PIVOT WELDMENT	6.93	13.85
3	6	X-CR-AGW	ANGLE ON WELDMENT	2.20	13.18
4	8	G5802	5/8" x 2" HDG HEX BOLT GR5	0.27	2.16
5	8	G58TRI-LNUT	5/8" HDG HEAVY 2H TRI-LOCK NUT	0.14	1.10
TOTAL WT. #					72.51

NOTE:  
CLAMP RING PIVOT WELDMENT SHOULD BE  
ASSEMBLED IN THE INNER HOLE OF WELDMENT



DETAIL A

NOTE:  
FOR TRI-LOCKNUT INSTALLATION, ENSURE GROOVED SIDE  
IS ORIENTED AWAY FROM THE BOLT HEAD



FINISH:  
HOT DIP GALVANIZED.

TOLERANCE NOTES

TOLERANCES ON DIMENSIONS, UNLESS OTHERWISE NOTED ARE:  
SAWED, SHEARED AND GAS CUT EDGES ( $\pm 0.030"$ )  
DRILLED AND GAS CUT HOLES ( $\pm 0.030"$ ) - NO CONING OF HOLES  
LASER CUT EDGES AND HOLES ( $\pm 0.010"$ ) - NO CONING OF HOLES  
BENDS AND ANGLES ARE  $\pm 1/2$  DEGREE  
ALL OTHER MACHINING ( $\pm 0.030"$ )  
ALL OTHER ASSEMBLY ( $\pm 0.060"$ )

PATENT INFORMATION: WWW.SITEPRO1.COM/PATENTS

PROPRIETARY NOTE:  
THE DATA AND TECHNIQUES CONTAINED IN THIS DRAWING ARE PROPRIETARY INFORMATION OF VALMONT INDUSTRIES AND CONSIDERED A TRADE SECRET. ANY USE OR DISCLOSURE WITHOUT THE CONSENT OF VALMONT INDUSTRIES IS STRICTLY PROHIBITED.

DESCRIPTION

FLEXIBLE RING MOUNT  
3-SIDED ASSEMBLY

CPD NO.

NCS

DRAWN BY

NSP 5/22/2024

ENG. APPROVAL

BMC 12/6/2024

CLASS

87

SUB

02

DRAWING USAGE

SHOP

CHECKED BY

CSL 12/6/2024



A valmont COMPANY

Engineering  
Support Team:  
sp1engineering@valmont.com

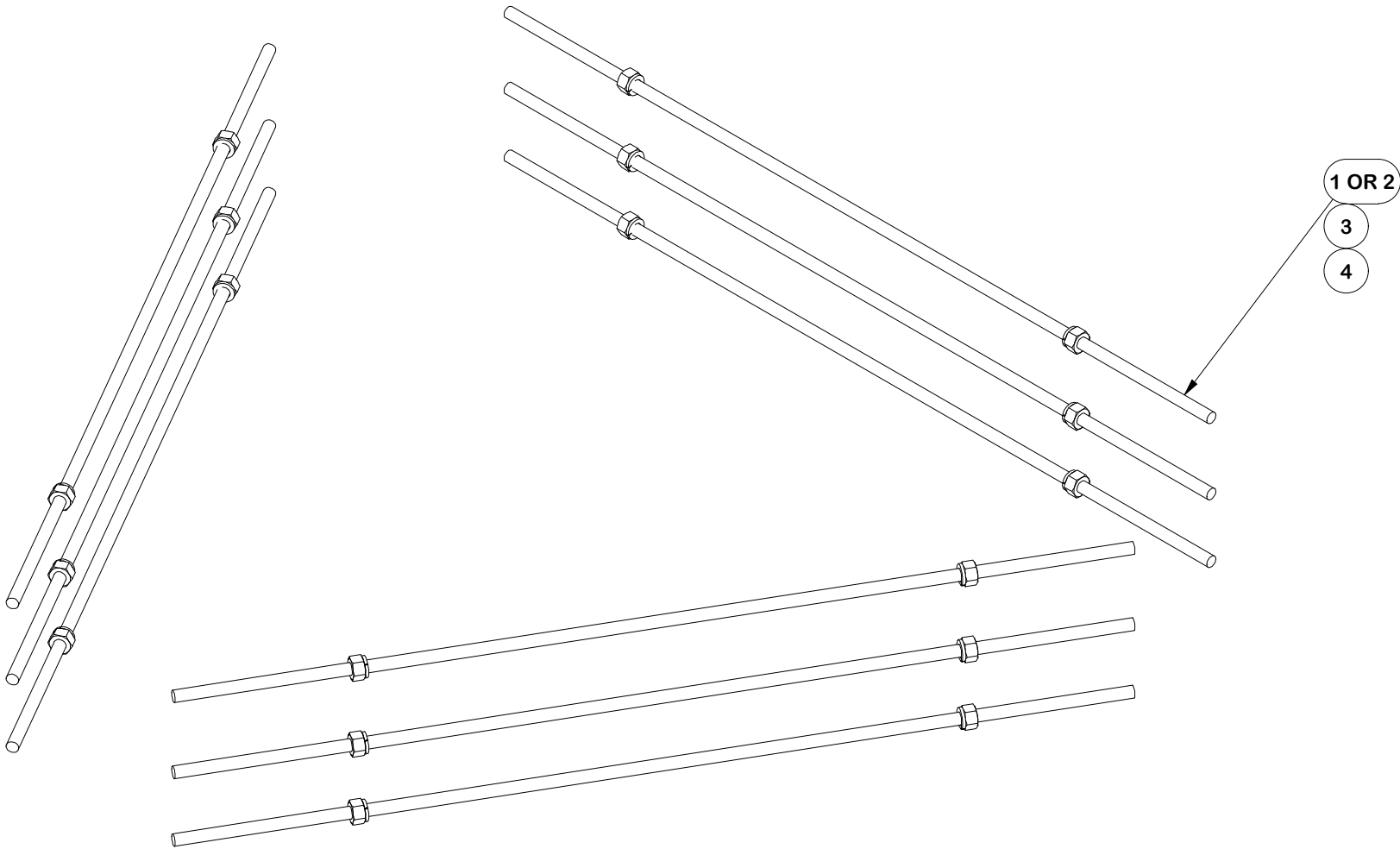
PART NO.

FLX-SDSS


DWG. NO.

FLX3-SD

PARTS LIST					
ITEM	QTY	PART NO.	PART DESCRIPTION	UNIT WT.	NET WT.
1	9	G58R-48	5/8" x 48" THREADED ROD (HDG.)	4.18	37.63
2	9	G58R-24	5/8" x 24" THREADED ROD (HDG.)	2.09	18.82
3	18	G58LW	5/8" HDG LOCKWASHER	0.03	0.47
4	18	G58NUT	5/8" HDG HEAVY 2H HEX NUT	0.13	2.34
TOTAL WT. #					59.26



FINISH:  
HOT DIP GALVANIZED.

	<div>TOLERANCE NOTES</div> <div>TOLERANCES ON DIMENSIONS, UNLESS OTHERWISE NOTED ARE: SAWED, SHEARED AND GAS CUT EDGES (<math>\pm 0.030''</math>) DRILLED AND GAS CUT HOLES (<math>\pm 0.030''</math>) - NO CONING OF HOLES LASER CUT EDGES AND HOLES (<math>\pm 0.010''</math>) - NO CONING OF HOLES BENDS AND ANGLES ARE <math>\pm 1/2</math> DEGREE ALL OTHER MACHINING (<math>\pm 0.030''</math>) ALL OTHER ASSEMBLY (<math>\pm 0.060''</math>)</div>		<div>DESCRIPTION</div> <div>FLEXIBLE RING MOUNT 3-SIDED ASSEMBLY</div>				<div><div><div>SITE PRO</div><div>1</div></div><div>Engineering Support Team: sp1engineering@valmont.com</div></div> <div>A valmont  COMPANY</div>				
	<div>PATENT INFORMATION: WWW.SITEPRO1.COM/PATENTS</div>		<div>CPD NO.</div> <div>NCS</div>		<div>DRAWN BY</div> <div>NSP 5/22/2024</div>		<div>ENG. APPROVAL</div> <div>BMC 12/6/2024</div>		<div>PART NO.</div> <div>LWRM-HDWE</div>		<div>PAGE</div> <div>5 OF 5</div>
	<div>PROPRIETARY NOTE: THE DATA AND TECHNIQUES CONTAINED IN THIS DRAWING ARE PROPRIETARY INFORMATION OF VALMONT INDUSTRIES AND CONSIDERED A TRADE SECRET. ANY USE OR DISCLOSURE WITHOUT THE CONSENT OF VALMONT INDUSTRIES IS STRICTLY PROHIBITED.</div>		<div>CLASS</div> <div>87</div>	<div>SUB</div> <div>02</div>	<div>DRAWING USAGE</div> <div>SHOP</div>		<div>CHECKED BY</div> <div>CSL 12/6/2024</div>		<div>DWG. NO.</div> <div>FLX3-SD</div>		